



GOOD MORNING

Have Good Trading Day

WEDNESDAY



Price is what you pay.  
Value is what you get.

- Warren Buffet



## MARKET PULSE

### INDIAN INDICES

NAME	CMP	NET CH.	%
SENSEX	26590	+31	+0.12
NIFTY	8060	+9	+0.12

### INDIAN ADR'S

SYMBOL	CLOSE	GAIN/ LOSS %
DRREDDY	66.31	+0.39
HDFCBANK	61.83	+0.90
ICICIBK	8.58	-1.83
INFY	18.35	+0.49
TATAMOTOR	29.88	+1.01
WIPRO	12.37	-0.08

### FII AND MF ACTIVITY

SYMBOL	In Crs.
FIIs Eq (Provisional)	-449.84
FIIs Index Future	402.35
FIIs Index Options	244.37
FIIs Stock Future	117.39
FIIs Stock Options	2.97
DII's Eq (Provisional)	350.31

### CURRENCY

RBI RATE	03-NOV-2015
RUPEE - \$	65.4510
EURO	72.1008
YEN 100	54.2400
GBP	100.9647

## MARKET PULSE

### GLOBAL INDICES

NAME	CMP	NET CH.	%
DOW	17918	+89	+0.50
NASDAQ	5145	+18	+0.35
NIKKEI	19134	+451	+2.42
HANG SENG	23292	+723	+3.21
SGX NIFTY	8148	+73	+0.90

### WORLD COMMODITIES

FUTURE	U\$	CHANGES
CRUDE	47.91	+0.01
NATURAL GAS	2.266	+0.013
GOLD	1121.2	+7.10
SILVER	15.300	+0.061
COPPER	2.3375	+0.0070

### WORLD EVENTS

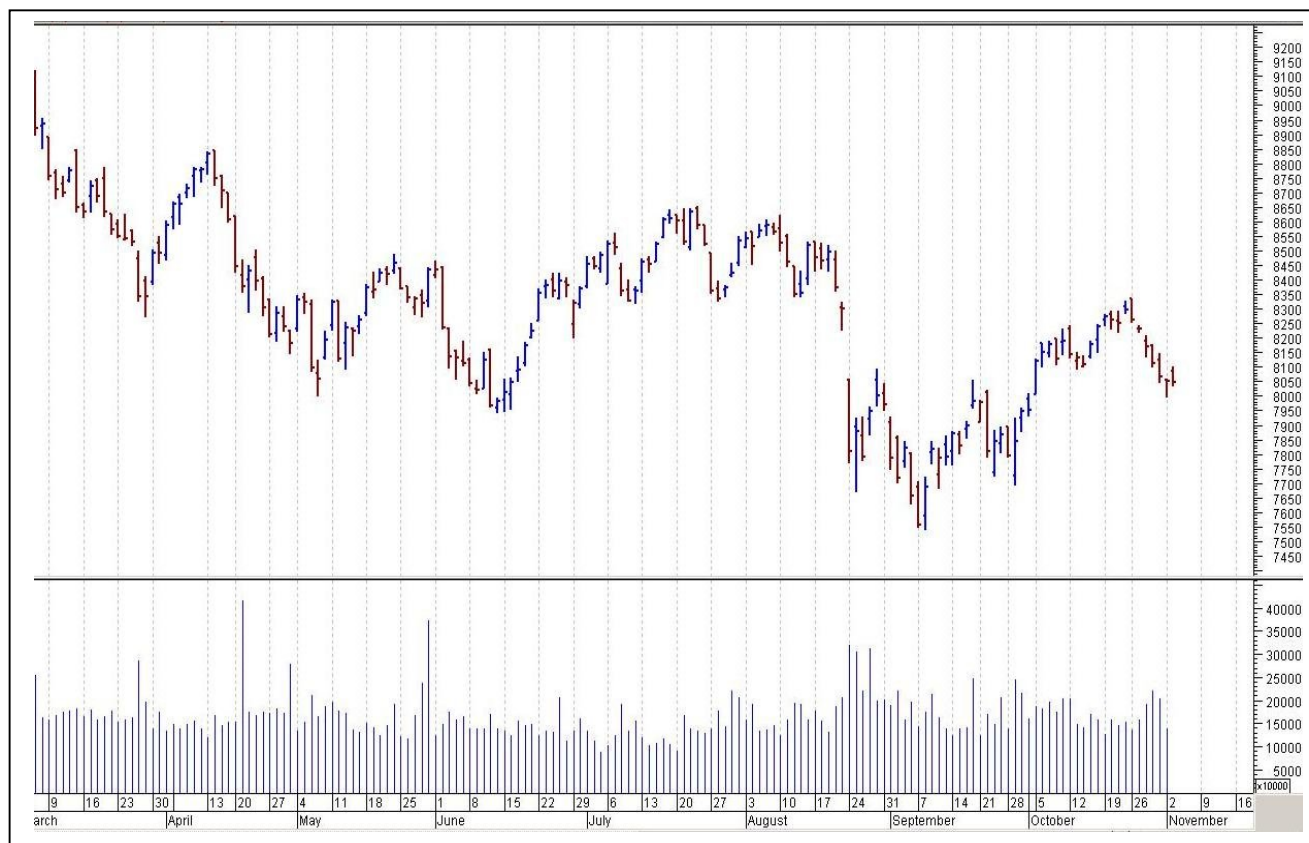
- US: Trade Balance
- Fed Chair Yellen Testifies
- ISM Non-Manufacturing PMI
- UK: Services PMI

## TOP STORY

- Amtek Group looking to sell Barista, its Italian coffee chain as part of plans to exit non-core businesses.
- Tech Mahindra Q2 Cons Net Profit At `785.6 Cr Vs `676.1 Cr (QoQ). Cons Dollar Revenue At \$1,011 m Vs \$989 m (QoQ). Cons Rupee Revenue At `6615.5 Cr Vs `6,293.8 Cr (QoQ)
- GAIL Q2 Net Profit At `440.5 Cr Vs `424.1 Cr (QoQ) Total Income At `14,165 Cr Vs `12,565 Cr (QoQ)
- Power Grid Q2 Net Profit Up 20.5% At `1,448 Cr Vs `1,201.3 Cr (YoY) Total Income Up 17.7% At `4,918 Cr Vs `4,178.5 Cr (YoY)
- DLF Q2 Cons Net Profit Up 20.6% At `131.5 Cr Vs `109 Cr (YoY) Cons Total Income Down 7.3% At `1,865.5 Cr Vs `2,013 Cr (YoY)
- NBCC Secured Business Worth Approx `481.25 Cr In October
- NMDC Says: April-October Production At 15.09 mt & Sales At 15.73 mt



## NIFTY CHART



## MARKET COMMENTARY

Indian markets finally managed to break their six days losing streak, though the trade was pretty volatile and markets after a gap down opening kept swinging between gains and losses for the whole second half, ending with modest gains only. Earlier the bourses made a strong start supported by good global cues and both the benchmarks reclaimed their crucial psychological levels of 26700 (Sensex) and 8100 (Nifty). Traders were encouraged by the good growth in core sector, which constitutes almost 38 percent of the industrial production. India's core sector output growth rose to a four-month high in September at 3.2% in compared to 2.6% in the same period last year and previous month's 2.6. For today's trade nifty likely to trade in the range between 8080 – 8120 in the upper side and 8040 – 8010 in the lower side.

### MARKET LEVELS

	CMP	SUPPORT LEVELS				RESISTANCE LEVELS			
NIFTY	8060	8040	8010	7980	7950	8080	8120	8150	8200
USDINR	65.93	65.8	65.74	65.65	65.5	66.05	66.15	66.2	66.25





### FUTURES CORNER

SCRIPS	CLOSE	SUPPORT	TARGET		REMARKS
		STOP LOSS	T1	T2	
ONGC	247.3	245	251	254	TRADING CALL
OIL	402.25	398	410	418	TRADING CALL
RCOM	82	81	84	86	TRADING CALL

### EQUITY CORNER

SCRIPS	CLOSE	SUPPORT	TARGET		REMARKS
		STOP LOSS	T1	T2	
FSL	32.95	32	35	36	TRADING CALL
RADICO	108.8	106	114	118	TRADING CALL

### DELIVERY BASED CALL / INVESTMENT CALL

SCRIPS	CMP	SUPPORT	TARGET		REMARK
		STOP LOSS	T1	T2	

### BULK DEALS (BSE)

SCRIP	CLIENT NAME	BUY/SELL	QUANTITY	PRICE
SUBEX	QVT MAURITIUS WEST FUND	S	3,500,000	11.29
SUBEX	MERRILL LYNCH CAPITAL MARKETS ESPANA SA SV	S	1,680,000	11.05

### BULK DEALS (NSE)

SCRIP	CLIENT NAME	BUY/SELL	QUANTITY	PRICE
EROSMEDIA	HANDELSBANKEN GLOBAL FOND	SELL	701691	254.6
SUBEX	MERRILL LYNCH CAPITAL MARKETS ESPANA S.A SV FCCB	SELL	8862088	10.97
SUBEX	QVT MAURITIUS WEST FUND FCCB A/C	SELL	6063886	11.21

### SCRIP'S IN F&O BAN

(To resume for normal trading below 80% of market wide limit required)

NIL



NIFTY 50 STOCKS: SUPPORT & RESISTANCE						
Symbol	Close	Support 1	Support 2	Pivot Point	Resistance1	Resistance2
ACC	1425.9	1409.23	1392.57	1421.62	1438.28	1450.67
ADANIPORTS	291.2	287.17	283.13	294.33	298.37	305.53
AMBUJACEM	209.7	202.03	194.37	216.52	224.18	238.67
ASIANPAINT	814.2	806.60	799.00	819.65	827.25	840.30
AXISBANK	474.7	470.83	467.02	477.17	480.98	487.32
BAJAJ-AUTO	2424.6	2407.05	2389.55	2428.60	2446.10	2467.65
BANKBARODA	162.0	160.70	159.45	162.50	163.75	165.55
BHARTIARTL	347.7	344.43	341.22	349.12	352.33	357.02
BHEL	201.1	198.97	196.88	200.58	202.67	204.28
BOSCHLTD	20700.1	20570.07	20440.03	20730.03	20860.07	21020.03
BPCL	876.7	867.43	858.17	875.72	884.98	893.27
CAIRN	154.9	153.55	152.20	154.75	156.10	157.30
CIPLA	675.4	668.98	662.57	677.52	683.93	692.47
COALINDIA	325.9	324.45	323.05	326.20	327.60	329.35
DRREDDY	4335.2	4307.93	4280.72	4326.47	4353.68	4372.22
GAIL	307.2	299.65	292.15	307.50	315.00	322.85
GRASIM	3699.0	3684.63	3670.32	3702.32	3716.63	3734.32
HCLTECH	876.1	872.93	869.77	877.42	880.58	885.07
HDFC	1221.4	1213.15	1204.90	1223.25	1231.50	1241.60
HDFCBANK	1084.9	1078.73	1072.57	1085.37	1091.53	1098.17
HEROMOTOCO	2582.8	2546.97	2511.18	2571.98	2607.77	2632.78
HINDALCO	82.4	81.23	80.12	82.82	83.93	85.52
HINDUNILVR	804.5	800.93	797.42	804.72	808.23	812.02
ICICIBANK	279.5	277.53	275.62	280.12	282.03	284.62
IDEA	139.3	138.13	136.97	139.82	140.98	142.67
INDUSINDBK	911.9	906.57	901.28	913.78	919.07	926.28
INFY	1145.5	1135.78	1126.07	1143.12	1152.83	1160.17
ITC	334.9	332.13	329.42	335.52	338.23	341.62
KOTAKBANK	683.1	675.87	668.63	682.93	690.17	697.23
LT	1373.3	1361.63	1349.97	1379.27	1390.93	1408.57
LUPIN	1874.6	1856.05	1837.55	1883.50	1902.00	1929.45
M&M	1233.0	1217.13	1201.32	1226.32	1242.13	1251.32
MARUTI	4482.6	4458.00	4433.45	4489.60	4514.15	4545.75
NTPC	135.7	133.20	130.70	135.50	138.00	140.30
ONGC	250.7	246.83	242.97	249.17	253.03	255.37
PNB	130.3	129.28	128.32	130.87	131.83	133.42
POWERGRID	131.7	130.52	129.38	131.33	132.47	133.28
RELIANCE	967.2	962.15	957.10	966.30	971.35	975.50
SBIN	236.0	234.07	232.18	236.88	238.77	241.58
SUNPHARMA	868.6	861.63	854.72	869.72	876.63	884.72
TATAMOTORS	382.1	378.15	374.25	384.70	388.60	395.15
TATAPOWER	68.9	68.27	67.68	68.93	69.52	70.18
TATASTEEL	235.7	232.73	229.77	237.87	240.83	245.97
TCS	2543.5	2525.37	2507.28	2536.58	2554.67	2565.88
TECHM	556.8	549.17	541.58	556.08	563.67	570.58
ULTRACEMCO	2925.5	2909.93	2894.37	2934.47	2950.03	2974.57
VEDL	98.4	96.83	95.27	98.87	100.43	102.47
WIPRO	574.3	570.52	566.78	575.08	578.82	583.38
YESBANK	779.3	770.03	760.77	775.77	785.03	790.77
ZEEL	414.9	412.75	410.60	414.60	416.75	418.60



## CORPORATE ACTION / BOARD MEETINGS

NSE Download Ref.No.:NSE/CML/31048:-Face Value Split - Shilpa Medicare Limited from Rs. 2 to Rs.1  
wef November 6, 2015

NSE Download Ref.No.: NSE/CML/31065:- Listing of Equity Shares of IDFC Bank Limited pursuant to  
Scheme of Arrangement wef November 06, 2015

### BOARD MEETINGS

COMPANY NAME	DATE	PURPOSE	RS. PER SH.
SHREECEM	5-Nov-15	Annual General Meeting/ Dividend	14
COLPAL	5-Nov-15	Dividend	4
DABUR	5-Nov-15	Dividend	1.25
RSYSTEMS	5-Nov-15	Dividend	0.25
EXIDEIND	5-Nov-15	Dividend	1.6
MUTHOOTFIN	5-Nov-15	Dividend	4
MPSLTD	5-Nov-15	Dividend	7
SRTRANSFIN	5-Nov-15	Dividend	4
HARITASEAT	6-Nov-15	Dividend	2.5
AEGISCHEM	6-Nov-15	Dividend	
SHRIRAMCIT	6-Nov-15	Dividend	5
SHILPAMED	6-Nov-15	Face Value Split From Rs 2 To Re 1	
NAVINFLUOR	6-Nov-15	Dividend	10
MARICO	9-Nov-15	Dividend	
SOLARINDS	9-Nov-15	Dividend	9
AARTIIND	9-Nov-15	Dividend	
MAYURUNIQ	9-Nov-15	Dividend	
ASTRAL	9-Nov-15	Dividend	
AARTIDRUGS	10-Nov-15	Dividend	
MANAKSIA	10-Nov-15	Dividend	
ONGC	10-Nov-15	Dividend	
MRF	10-Nov-15	Dividend	3

## NEWS & RUMOURS:

- Gold (Spot Dollar) major support = \$1092/\$1068 & Resistance = \$1139/\$1179.
- Crude oil range->\$43 to \$53.
- S&P, NASDAQ weighed down by health, consumer stocks: - The S&P 500 and NASDAQ were marginally lower on Tuesday morning led by a decline in healthcare and consumer stocks, but a rally in oil stocks helped the Dow eke out a small gain.
- Commodity Rout Has Room to Run as Fund Sees Oil, Iron at \$40: - The rout in commodities is set to get worse as resilient supply and faltering Chinese demand will see global gluts persist, sending oil and iron ore below \$40, according to Merchant Commodity Fund.
- Gold prices slide to 1-month low as losing streak continues: - Gold prices were on track to post their fourth consecutive losing session on Tuesday, as investors continued to cut holdings of the precious metal amid expectations the Federal Reserve will raise interest rates at its next meeting in December.
- U.S. natural gas futures rebound but warm weather limits gains: - U.S. natural gas futures rebounded from the prior session's steep declines on Tuesday, but gains were limited after meteorologists predicted warmer-than-normal temperatures in much of the U.S. in the weeks ahead.
- WTI oil futures rally above \$47 ahead of API weekly supply report: - West Texas Intermediate oil futures rallied sharply on Tuesday, as market players looked ahead to fresh weekly information on U.S. stockpiles of crude and refined products to gauge the strength of demand in the world's largest oil consumer.

## TRENDS & OUTLOOK – DATE: 04- Nov- 2015

### PRECIOUS METALS:

COMMDITY (MCX)	S2	S1	PIVOT POINT	R1	R2
GOLD (Dec)	25630	25880	26255	26490	26727
SILVER (Dec)	33900	34800	36000	37200	38365

### BASE METALS

COMMDITY (MCX)	S2	S1	PIVOT POINT	R1	R2
COPPER (Nov)	326	331	337	342	348
ZINC (Nov)	105.55	108	110.40	112.75	114.90
LEAD (Nov)	106.45	109	111.40	114.55	117.30
NICKEL (Nov)	624	642	663	681	699

### ENERGY

COMMDITY (MCX)	S2	S1	PIVOT POINT	R1	R2
CRUDE OIL (Nov)	2880	2970	3075	3193	3265
NATURAL GAS (Nov)	138	144	150	156	162

### DATE TALKS : TODAY'S ECONOMIC DATA :

ECB President Draghi Speaks, Caixin Services PMI of China, ECB President Draghi Speaks, Services PMI of GBP, FOMC Member Brainard Speaks, ADP Non-Farm Employment Change, Trade Balance, Final Services PMI, Fed Chair Yellen Testifies, ISM Non-Manufacturing PMI, Crude Oil Inventories.





Registered Office

Indira House, 3rd Floor, 5 Topiwala Lane,  
Opp. Lemington Road Police Station, Grant Road (East), Mumbai - 400007.

Corporate Office

'Ramavat House' E-15, Saket Nagar, Indore - 452018 (M.P.)

Customer Care

Tel: +91-731-4097170/ 71/ 72/ 73/ 74 M. +91 93031 72345

Email: [customercare@indiratrade.com](mailto:customercare@indiratrade.com) [www.indiratrade.com](http://www.indiratrade.com)



INSTITUTIONAL DEALING UNIT

Africa House, 5, Topiwalla Lane, Lamington Road, Mumbai, 400007

Tel: +91 22 30080678 Fax : +91 22 23870767 Email : [ie@indiratrade.com](mailto:ie@indiratrade.com)

**Disclaimer**

This report is for private circulation within the Indira Group. This report is strictly confidential and for information of the selected recipient only and may not be altered in any way, transmitted to, copied or distributed, in part or in whole, to any other person or to the media or reproduced in any form. This report should not be construed as an offer or solicitation to buy or sell any securities or any interest in securities. It does not constitute a personal recommendation or take into account the particular investment objectives, financial situations, or any such factor. The information, opinions estimates and forecasts contained here have been obtained from, or are based upon, sources we believe to be reliable, but no representation of warranty, express or implied, is made by us to their accuracy or completeness. Opinions expressed are our current opinions as of the date appearing on this material only and are subject to change without notice.